

## IP65 LED Linear Fixture



### General Description

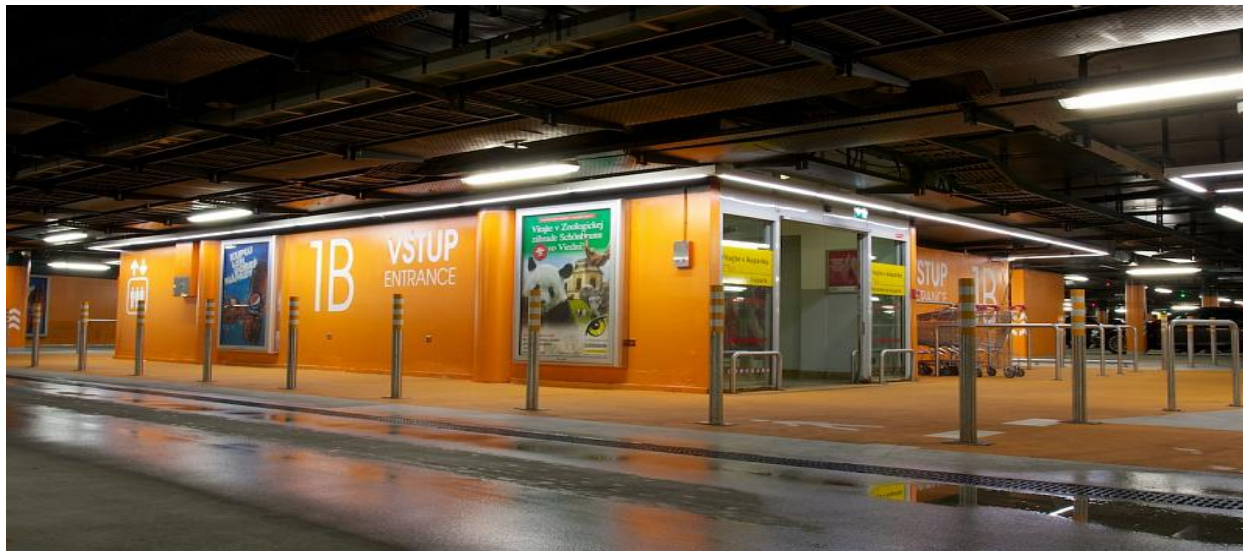
INNO-TECH 'S brand NEW IP65 LED Linear Fixture designed for outdoor as well as indoor installations and is ideally suited for applications where wide-angle illumination is desired. These fixtures are IP65 rated and are an ideal solution for both wet and dry locations such as parking garages and exterior hallways as well as factory production areas, basements and storage areas. They are available in lengths from 2 feet to 5 feet with both ceiling mount and wall mount options.

### Features

- High Output LED's, up to **130m/W**, LM80 light source
- High CRI >80
- UL, FCC, TUV, RCM, CB, CE certified driver, High PF > 0.96 low THD driver
- Environmentally friendly, no mercury, No UV, No IR
- Linkable Option (Customize cable length)
- Wide beam angle 180°
- IP65 waterproof, dust, corrosion and pressure-proof; for indoor & outdoor use
- Energy Efficiency Grade: A+
- Quick Start instant 100% luminous flux
- 5 Year Warranty on complete fixture. (LED's, Driver, & Housing)
- Certificate: CE, RoHS, SAA, TUV (Pending)
- Options:
  - 1-10V Dimming,
  - 1-10v Step Dim Microwave Sensor > 15m (Can be used as On/Off on non 1-10v) MW,
  - 3h Emergency Battery Backup
- Hanging mount accessories included ; 90° adjustable mounting clips for option

## Applications

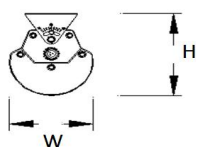
- Car parking Lighting
- School Lighting
- Workshops
- Supermarket
- Warehouse
- Storage



## Electrical and Technical Data

Model No	IT-LF-30W	IT-LF-40W	IT-LF-60W	IT-LF-80W	IT-LF-100W
Input Power	30W	40W	60W	80W	100W
CCT	3000-6000K	3000-6000K	3000-6000K	3000-6000K	3000-6000K
CRI	>85	>85	>85	>85	>85
Power Factor	>0.9	>0.9	>0.9	>0.9	>0.9
IP Grade	IP65	IP65	IP65	IP65	IP65
Input Voltage	200-240V	200-240V	200-240V	200-240V	200-240V
Luminous	125-130lm/W	125-130lm/W	125-130lm/W	125-130lm/w	125-130lm/w
Beam Angle	180°	180°	180°	180°	180°
Working Temp	-20°-50°	-20°-50°	-20°-50°	-20°-50°	-20°-50°

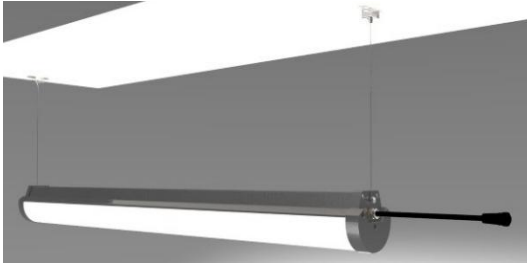
## Product Dimension&Package Details



Model	L(Norm)	W(Norm)	H(Norm)	N.W/PC	G.W/PC	Qty/CTN	Size/CTN
IT-LF-30W	900mm	105mm	127mm	2.2KG	2.5KG	4PCS/CTN	950*245*238mr
IT-LF-40W	1200mm	105mm	127mm	2.8KG	3.0KG	4PCS/CTN	1250*245*238r
IT-LF-60W	1200mm	105mm	127mm	2.8KG	3.0KG	4PCS/CTN	1250*245*238r
IT-LF-80W	1500mm	105mm	127mm	3.5KG	3.8KG	4PCS/CTN	1550*245*238r
IT-LF-100W	1500mm	105mm	127mm	4.0KG	4.3KG	4PCS/CTN	1550*245*238r

## Installation

Suspending

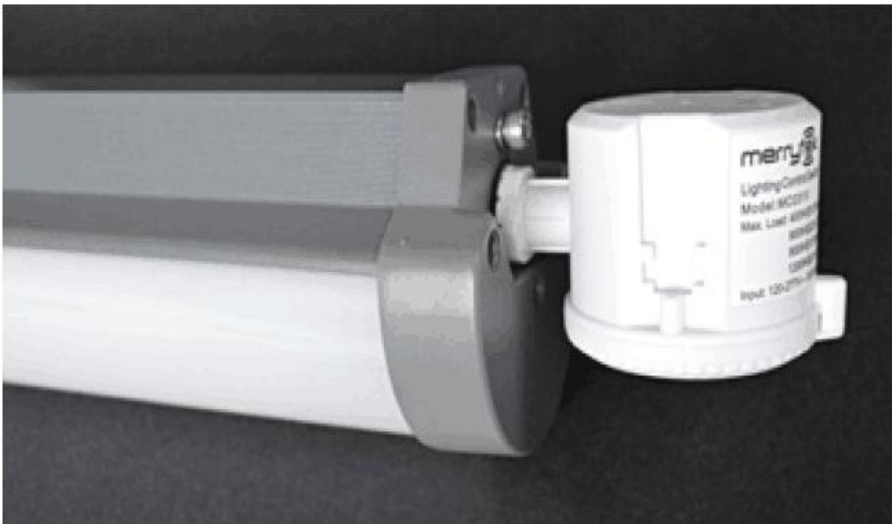


Surface Mounting



## Microwave Sensor&Emergency Option

- Operating voltage 120~277Vac, 50Hz/60Hz
- Rated load 400W@120Vac, 800W@220-277Vac (inductive)
- HF system 5.8GHz  $\pm$ 75MHz, ISM wave band
- Transmitting power <0.5mW
- Power consumption  $\leq$  0.8W(standby), <1.5W(operation)
- Detection zone Max.(D x H): 16m x 15m
- Detection sensitivity 100% / 50%
- Hold time 5s / 30s / 90s / 3min / 20min / 30min
- Daylight sensor 50lux / 100lux / 200lux / Disable
- Stand-by period 5s / 5min / 10min / 30min / 1h / Disable
- Stand-by dimming level 10% / 20% / 30% / 50%
- Mounting height 15m Max.
- Motion detection 0.5~3m/s
- Detection angle 150°(wall installation), 360°(ceiling installation)
- Operating temperature -35 °C ~70
- IP65



## Emergency Spec

Model	Battery Spec
IT-LF-30W	4400mAh-7.4V
IT-LF-40W	4000mAh-11.1V
IT-LF-60W	5200mAh-11.1V
IT-LF-80W	6600mAh-11.1V
IT-LF-100W	4400mAh-22.2V

- Emergency Duration 3 hours
- Emergency output 30% nominal power
- Battery Type Ni-Cd
- Charge time <12Hours
- Max Case Temp 70°C
- Max Battery Temp 70°C